

9" Square "Wave" Anti-Entrapment Suction Outlet Cover, Vented Riser Ring and Mud Frame

VGB Series

The AquaStar line of suction outlet covers, compliant with the new Virginia Graeme-Baker Pool and Spa Safety Act (ANSI/APSP 16-2011 and NSF 50-2008)

Features

For single or multiple drain use
(see installation instructions)

Single – 3" sump depth:
Floor/wall: 224 GPM at 1.5 fps

48.4 square inch opening

Easily and safely retrofits most brands' existing 9" square $\frac{3}{4}$ " deep frames*

Additional sump versions also available

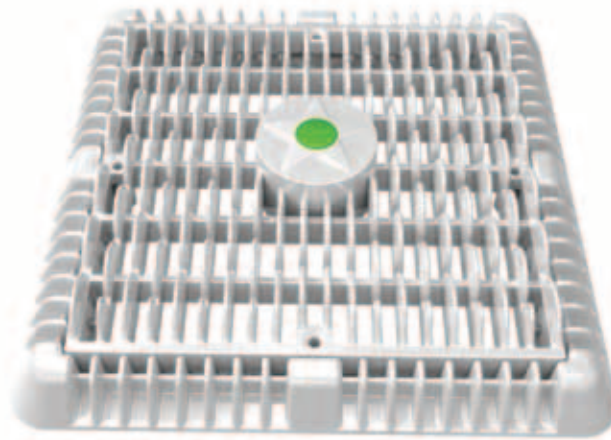
Trademarked VGB compliance button easily identifies VGB 2008 compliant cover from on deck and underwater

#316 stainless steel screws

Manufactured from superior UV-resistant engineered polymers

All components (cover, sump, screws) meet or exceed ANSI/APSP 16-2011 and NSF 50-2008 national standards and ASTM G154 UV testing exposure

8 per case








U.S. patents D623727 and D663388

Part # WAV9WRxxx

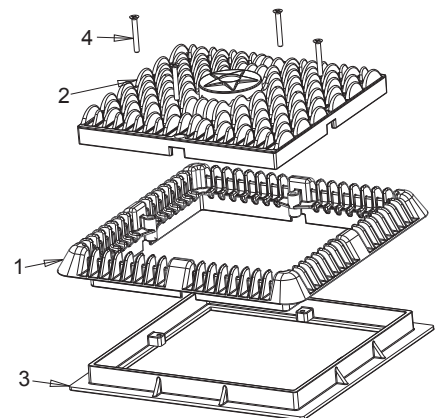
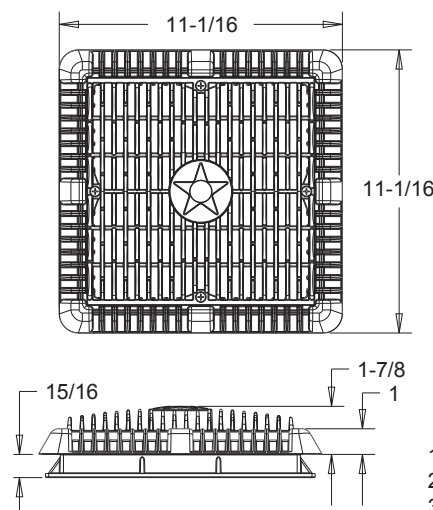
*Fits: AquaStar (all standard 9" square), Pentair (#1 selling) with $\frac{3}{4}$ " deep existing frames and four screw hole pattern

STANDARD COLORS

	101		105
	102		108
	103		

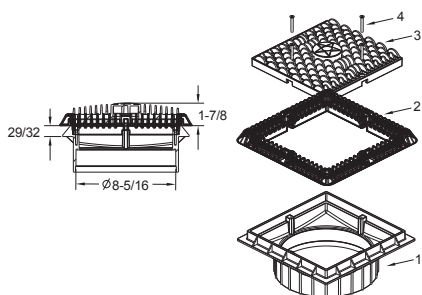
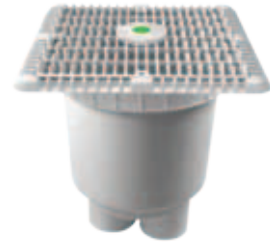
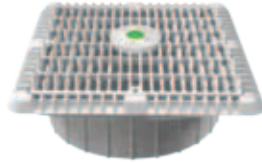
9" Square Vented Riser Ring also sold separately p/n 9RRxxx

VGB 2008 Compliant

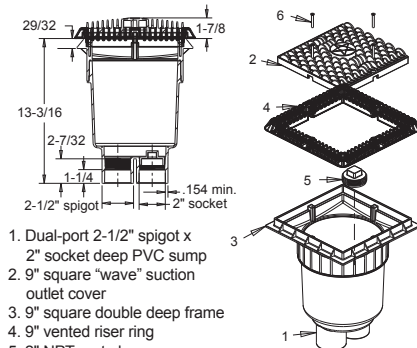


1. 9" vented riser ring
2. 9" square "wave" suction outlet cover
3. 9" square drain frame
4. #10 x 1-3/4" flat head phillips type-a screw, 316 ss, qty 4

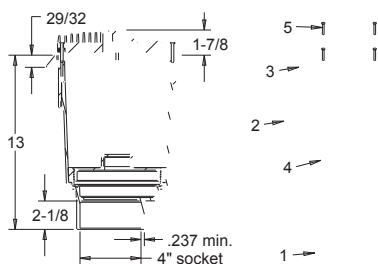
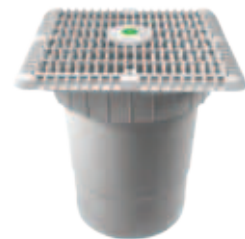
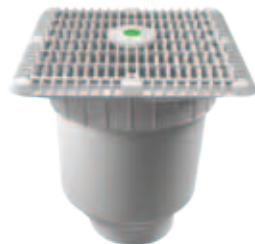
ADDITIONAL PRODUCT CONFIGURATIONS FOR WAV9WRxxx



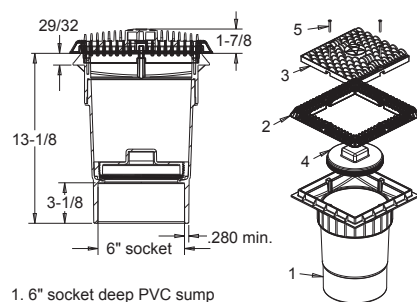
1. 9" square double deep frame
2. 9" vented riser ring
3. 9" square "wave" suction outlet cover
4. #10 x 1-3/4" flat head phillips type-a screw, 316 ss, qty 4



1. Dual-port 2-1/2" spigot x 2" socket deep PVC sump
2. 9" square "wave" suction outlet cover
3. 9" square double deep frame
4. 9" vented riser ring
5. 2" NPT port plug
6. #10 x 1-3/4" flat head phillips type-a screw, 316 ss, qty 4



1. 4" socket deep PVC sump
2. 9" vented riser ring
3. 9" square "wave" suction outlet cover
4. 6" NPT plug
5. 10 x 1-3/4" lg flat head phillips screw, 316 ss, qty 4



1. 6" socket deep PVC sump
2. 9" vented riser ring
3. 9" square "wave" suction outlet cover
4. 6" NPT plug
5. 10 x 1-3/4" lg flat head phillips screw, 316 ss, qty 4